

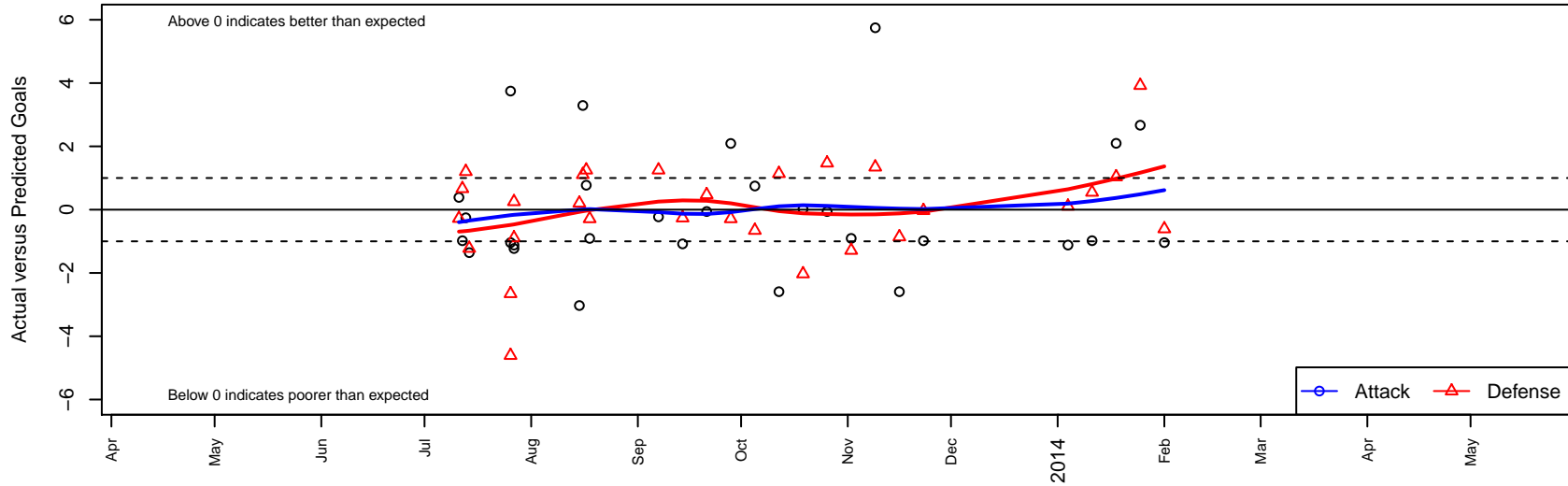
Kent United Green B01

Kent United
 Kent, WA
 B01 total strength=684
 attack=0.94 defense=0.48
 fall league = NPSL B12D2
 alt names used:
 Kent United B01 Green
 KENT UNITED B01 GREEN (WA)

Venues played:
 Kent Cornucopia Cup BU12/BU13 Silver U13
 Crossfire Select Cup BU12 Gold
 Bigfoot Silver U12
 NPSL B12D2
 Founders Cup B01



Kent United Green B01
 Dots are actual minus expected GF (blue circles) and GA (red triangles).
 Blue line is smoothed change in attack strength. Red is smoothed change in defense strength.



	date	home		away		venue	pred.home	pred.away
21993	2014-02-01	Seattle United W Blue B01	3	Kent United Green B01	0	Founders Cup B01	2.39	1.0
21709	2014-01-25	Tacoma United San Martin B01	0	Kent United Green B01	4	Founders Cup B01	3.92	1.3
21317	2014-01-18	Kent United Green B01	7	Crossfire Select Perry B01	0	Founders Cup B01	4.90	1.0
21095	2014-01-11	Seattle United S White B01	0	Kent United Green B01	4	Founders Cup B01	0.55	5.0
20896	2014-01-04	Kent United Green B01	0	TUSK United B01	3	Founders Cup B01	1.12	3.1
19086	2013-11-23	Kent United Green B01	1	NSC Thunder B01	2	NPSL B12D2	1.98	2.0
18419	2013-11-16	NSC Vortex B01	2	Kent United Green B01	1	NPSL B12D2	1.14	3.6
17676	2013-11-09	Mercer Island FC Cascade B01	0	Kent United Green B01	10	NPSL B12D2	1.34	4.3
16684	2013-11-02	Kent United Green B01	1	Seattle United Shoreline Blue B01	3	NPSL B12D2	1.91	1.7
15792	2013-10-26	Storm King B01	0	Kent United Green B01	2	NPSL B12D2	1.47	2.1
14872	2013-10-19	NSC Thunder B01	4	Kent United Green B01	2	NPSL B12D2	1.97	2.0
13811	2013-10-12	Kent United Green B01	1	NSC Vortex B01	0	NPSL B12D2	3.59	1.1
12793	2013-10-05	Kent United Green B01	5	Mercer Island FC Cascade B01	2	NPSL B12D2	4.25	1.3
11850	2013-09-28	Seattle United Shoreline Blue B01	2	Kent United Green B01	4	NPSL B12D2	1.71	1.9
10902	2013-09-21	Kent United Green B01	2	Storm King B01	1	NPSL B12D2	2.06	1.5
9929	2013-09-14	Impact FC Black B01	2	Kent United Green B01	1	NPSL B12D2	1.74	2.1
8984	2013-09-07	Kent United Green B01	1	Seattle United NE Blue B01	1	NPSL B12D2	1.23	2.3
7398	2013-08-18	Kent United Green B01	1	Seattle United Shoreline Blue B01	2	Bigfoot Silver U12	1.91	1.7
7007	2013-08-17	Kent United Green B01	2	Seattle United NE Blue B01	1	Bigfoot Silver U12	1.23	2.3
6766	2013-08-16	Kent United Green B01	7	Lake Hills Legends B01	0	Bigfoot Silver U12	3.71	1.1
6669	2013-08-15	ISC Arsenal White B01	0	Kent United Green B01	4	Bigfoot Silver U12	0.20	7.0
4663	2013-07-27	Kent United Green B01	0	Seattle United NE Blue B01	2	Crossfire Select Cup BU12 Gold	1.23	2.3
4674	2013-07-27	Kent United Green B01	0	TUSK United B01	4	Crossfire Select Cup BU12 Gold	1.12	3.1
4500	2013-07-26	Seattle United W Blue B01	7	Kent United Green B01	0	Crossfire Select Cup BU12 Gold	2.39	1.0
4507	2013-07-26	Mercer Island FC Cascade B01	4	Kent United Green B01	8	Crossfire Select Cup BU12 Gold	1.34	4.3
3201	2013-07-14	BYSC Select Venom B01	3	Kent United Green B01	0	Kent Cornucopia Cup BU12/BU13 Silver U13	1.78	1.4
2958	2013-07-13	Kent United Green B01	2	WS Tecos B00	1	Kent Cornucopia Cup BU12/BU13 Silver U13	2.26	2.2
2764	2013-07-12	Spokane Pumas B01	0	Kent United Green B01	9	Kent Cornucopia Cup BU12/BU13 Silver U13	0.66	10.0

	date	home		away		venue	pred.home	pred.away
2685	2013-07-11	Kent United Green B01	2	Kitsap Pumas 2 B00	2	Kent Cornucopia Cup BU12/BU13 Silver U13	1.61	1.7